



We like to play

The children at St. Albans develop and learn new understanding, knowledge and skills by actively taking part in a broad range of play activities.

The children are encouraged to:

- Have fun and enjoy their learning.
- Be involved in a variety of activities and experiences.

Young children learn best when they are encouraged to have a go!

At St. Albans we provide lots of activities for the children to 'have a go' at. They will paint, make models, play in sand and water, etc. This means that they may get 'messy'. It is better for the children if they are dressed in comfortable clothes that they are free to play and experiment in.

Enabling environment.

St Albans Community Association.
St Albans Road, Smethwick.
West Midlands. B67 7NL

Centre Manager: Tonia Flannagan

Enquiries: Michelle Pearson

Tel: 0121 558 0018 (Ext.4)

Email: michelle.pearson@stalbans-cc.co.uk

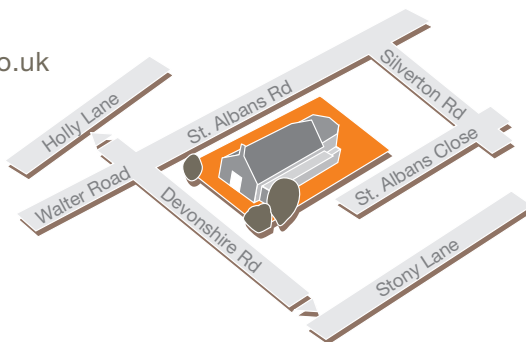
Web: www.stalbans-cc.co.uk

Bus Service:

Bus No's 444 and 446 Devonshire Road.
448 and 449 Holly Lane.

Train Service:

The nearest railway stations are:
Smethwick Rolfe Street and
Smethwick Galton Bridge.



Parents / Carers are always welcome in the pre-school. Leaflets and documents containing further information about St. Albans Pre-School, and Early Years Education are available on request.



Working with the community

pre-school
prospectus

www.stalbans-cc.co.uk



We provide Early Years development and education in a safe & caring environment.

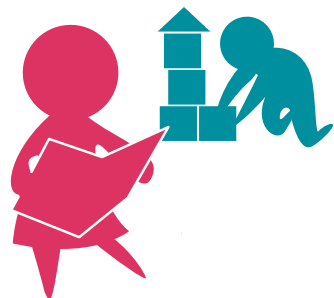
We are **Ofsted** registered and have been accredited by the **Pre-School Learning Alliance** for the high quality of service that we provide.

We admit children 2 – 4 years old.

We have 2 sessions daily,
5 days per week.

9 – 12 noon & 12.30 – 3.30 pm

We provide healthy snacks of fresh fruit and milk or water.



Unique child learning & development

Positive relationships



Charges

£6 per session

(Children of 3 to 4 years receive a nursery grant)

Our staff are NVQ qualified and 3 members of staff are working towards a degree in Children's service.

We have well resourced areas for learning, both indoors and out.



We aim to meet the individual needs of each child



EYFS

(Early Years Foundation Stage)

These include learning areas:

- Personal, social and emotional development.
- Communication, language and literacy.
- Mathematical development.
- Creative development.
- Physical development.
- Knowledge and understanding of the world.

